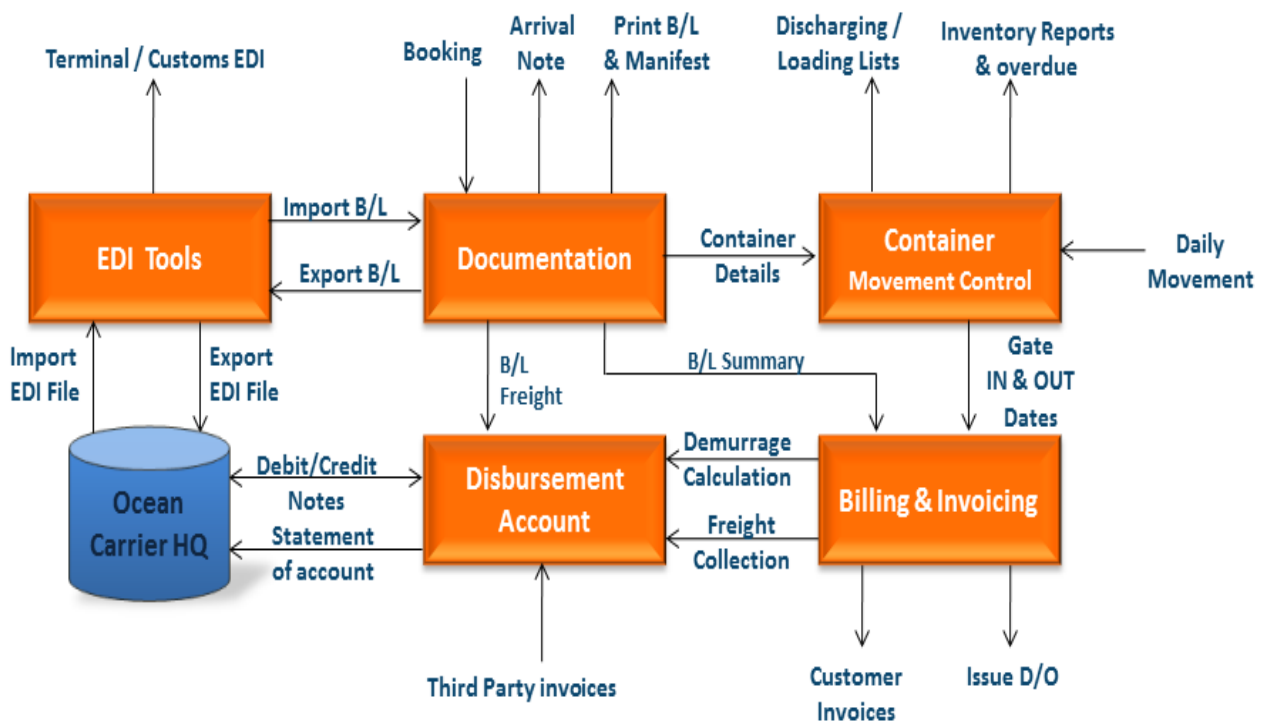


IST-Ship link system has been designed to serve shipping agencies of global shipping lines in the Middle East and the Gulf area, as the system handles import and export B/Ls and follow-up the movement of containers and issue customers invoices.

The system includes the following:

- EDI & XML.
- Import manifest and arrival notification.
- Shipping orders and Export B/L.
- Billing & invoicing and delivery order.
- Container Control and loading & discharge lists.
- Disbursement Account.

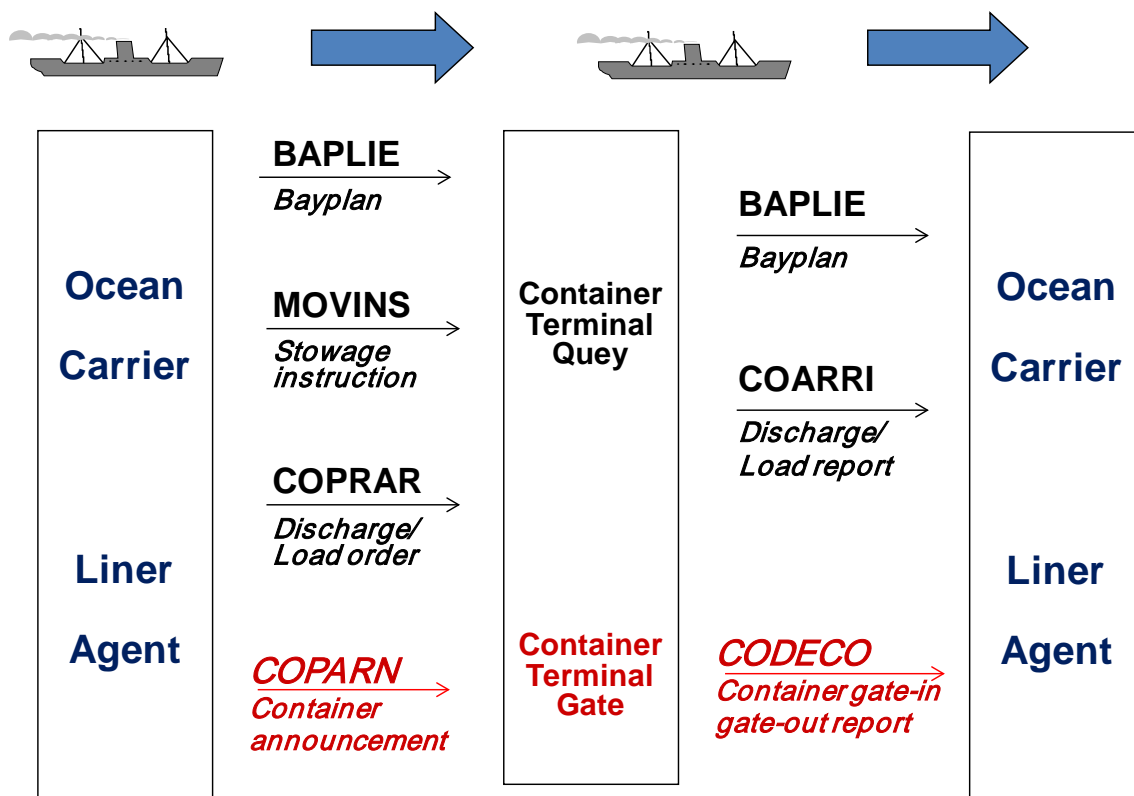




EDI & XML

The system allows the exchange of import and export manifest with the shipping line or with other shipping agents; the system also provides the ability to send the manifest of customs authority. Also, the user can electronically receive the gate in /out movements to be uploaded into the system database.

The system deals with most types of international messages like:
UN-EDIFACT, XML, ANSI X12 and Flat Files





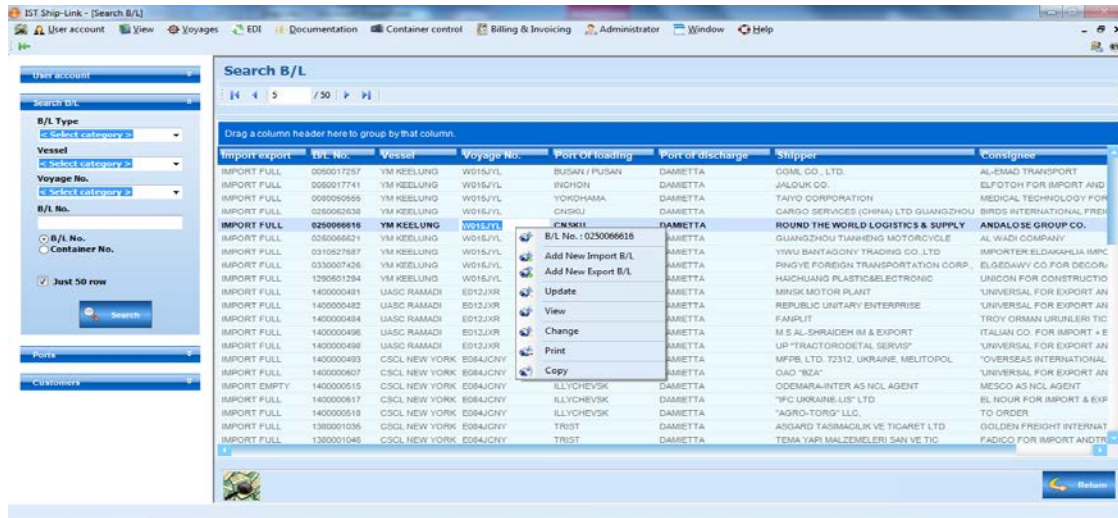
IST SHIP-LINK

Shipping Agency Management System

Import manifest and arrival notification

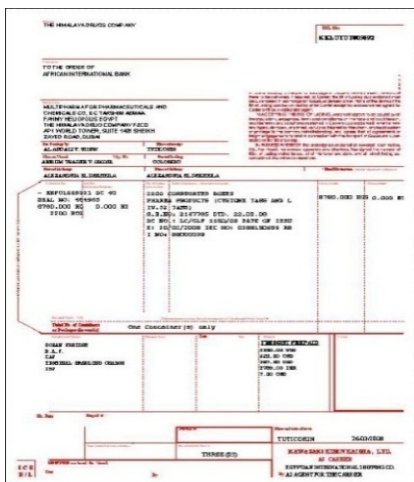
The system enables the user to enter the expected arrival date of the trip and the actual date; it also allows the receipt of manifest coming through EDI or EXCEL file or entered manually.

The arrival notification can be sent to the consignee by e-mail or fax, and the system allows the user to translate the data needed by the customs authority in Arabic and then sending the EDI file of customs authority.



Shipping order and export B/L

The system allows the user to enter the data of draft shipping order until getting the confirmation from the shipper, in this case; a container release order can be issued as the shipper starts the stuffing of cargo inside the empty containers and returning them again. After shipping the containers on board; the system issues the original bill of lading.





IST SHIP-LINK

Shipping Agency Management System

Billing & invoicing and delivery order

The system automatically issues the invoices based on the agreed tariff of stevedoring, the system also receives the deposit of the consignee and shipper then deducting any amounts owed by the client such as container demurrage or container damage or delivery order expenses and then return the remaining amount of the deposit to the client.

The screenshot displays the 'IMPORT THC > DAM IMPORT' interface. On the left, there's a sidebar with 'Template name' set to 'DAM IMPORT'. The main area shows an invoice table with columns: Invoice Item, Amount, Currency, Calculation type, Size, Container type, Unit Price, Amount, Unit Price, Unit Price, and Expense. Below the table are 'Item order' buttons. On the right, a 'Delivery Order No. 56' form is visible, including fields for 'Date', 'To the Customs Manager of Port', 'These address to Shipment', 'The following goods entered per set', and a table for 'Stacks at the Quay' with columns for 'Stacks at the Quay', 'Quantity', 'Description', and 'Weight'. At the bottom right, there are office addresses for Damour, Tripoli, and Beirut.

Container control and loading & discharge lists

The system allows the entry of a complete copy of the containers since discharging from the ship then sending full to the consignee, then returning them back empty and then loading empty on board or sending empty to shipper and returning full to be shipped on board through an export B/L.

The system automatically transfers the import and export containers from manifest and prepares the list of loading & discharging to be sent to terminal; it also enables the user to follow-up stock of containers either inside the terminal or at customer's site and follow up overdue containers.

The system also provides the discharging & loading of transit containers between mother vessels and feeders, and prepares the preloading and final lists.

The screenshot shows the 'Full container - Discharge' interface. The main area contains a large table with columns: Container No., ISO code, Operator, Code, POC, VPO, VPO, VPO, Weight, TWP, ISO CODE, ISO NET, ISO GROSS, and VPO. The table lists various container numbers and their corresponding details. On the right, a 'Discharge List' form is displayed, including fields for 'Line: APL', 'Vessel: APL ARGENTINA', 'Voyage: 046', and 'Arrival Date: 07/06/2009'. Below the form is a table with columns: Ser., Container No., Type, PDL, POD, PFD, GW, BL No., IMO, and Remarks. At the bottom right, there are office addresses for Damour, Tripoli, and Beirut.




Disbursement Accounts

Based on the contract signed with the shipping line; the system sums the freight and demurrage collected for the favour of shipping line and calculates the commission (whether import or export) and records the remittances between the agent and the shipping line and issues debit/credit notes, and finally the system issues monthly statement of account for the shipping line.

InfoSysTech - IST		شركة انفو سيستك	
Honey Mabrouk St., Suez Alexandria, 21097 Tel: (+2) 03 424 0177 Fax: (+2) 03 424 0188		شركة انفو سيستك المنطقة الاقتصادية لقناة السويس القاهرة 1157 - 1156 الهاتف: 03 424 0177 الفاكس: 03 424 0188	
www.isteg.com		www.isteg.com	
Statement of Account For Month: 1/2010			
	DR.	CR.	
A) BALANCE OF OUR FAVOR DTD 12/2009	135798.20		
B) TOTAL FREIGHT COLLECTION FOR 1/2010		245958.80	
C) TOTAL DETN. COLLECTION FOR 1/2010		31775.00	
D) REMITTANCES FM IST DURING 1/2010		191801.00	
E) TOTAL HDLs FOR 1/2010	463069.88		
F) CREDIT NOTES 1,2,3,4,5,6,7		698.86	
	598868.08	470233.66	
G) BALANCE		128634.66	
TOTAL	598868.08	598868.05	

Damietta Office Damasia post-Box 4000 Tel: (+2) 03 22111 Fax: (+2) 03 22124 Th: 03720113	Port Said Office El-Fouka El-Fayoua Building Tel: (+2) 069133392 Fax: (+2) 069133389 Th: 069133395	Suez Office Port Said office Building No.1 Tel: (+2) 069232332 Fax: (+2) 069232325 Th: 069146
-------------------------------------------------------------------------------------------------------------	-----------------------------------------------------------------------------------------------------------------------	------------------------------------------------------------------------------------------------------------------



General characteristics

- Linking the branches where the system enables the user to link all company branches to one central database.
- Bilingual system allows the user to deal in both Arabic and English.
- Compatibility with the business model, systems and regulations followed inside the country.
- Integration with the known accounting systems.
- Flexibility in the identifying system inputs, databases in a way that allows the user to use the system by more than way.
- Protection and users privileges, as the system assigns a multi-levels password to each user to specify the privileges of each user in the system whether for an individual or a group.